

FREE



# TQ

VISITOR GUIDE

# Hello & Welcome

Here's your essential guide to enjoying Titanic Quarter (TQ) on the Maritime Mile.

Nowhere else in the world can claim a greater or prouder association with the most famous ship ever built. So why not begin your very own voyage of discovery in TQ? Our guide will not only show you where to find out about the Quarter's maritime and industrial heritage but provides you with helpful information on all of our popular attractions, regular tours, activities, events, places to eat and how to get around the Quarter.

You can walk on-board the last remaining White Star Line ship SS Nomadic, descend 44ft to the bottom of Titanic's Dock, book a Sunday Afternoon Tea at Titanic Belfast, or visit the Great Light on the Titanic Walkway,

one of the World's largest lighthouse optics ever built. You can be wowed by science in W5 and Titanic Belfast's Ocean Exploration Centre, or visit HMS Caroline, a unique survivor from the Battle of Jutland. You can explore the birthplace of a legend and walk in the footsteps of Titanic workmen on one of the many exciting walking tours of the Quarter. For the more adventurous, try the exciting world of indoor skydiving at Vertigo Indoor Skydiving. While you're planning your visit, don't forget to check out the world-class entertainment at the SSE Arena, Belfast which plays host to major concerts, family shows, sporting events and is home to the Belfast Giants ice hockey team. There is something for everyone along the Maritime Mile.

## Events & Festivals in TQ #TQEventsBelfast

   TQEventsBelfast

As a fan of our page, you can also be the first to find out about festivals, events, entertainment & exclusive offers. So come and join us online, and don't forget to share all your pictures, videos and TQ experiences.



# Contents

Attractions .....	4-7
Regular Tours, Activities and Events .....	10-11
Top Travel Tips .....	13
Eating Out.....	14-16
Explore Titanic Quarter on the Maritime Mile .....	18-19



# TITANIC THE LEGEND THE STORY

Explore the sights, sounds and stories of RMS Titanic at this world leading visitor attraction, located here in the city where it all began.

Visit website for details of seasonal events.



TITANIC BELFAST

Book now at

[titanicbelfast.com](http://titanicbelfast.com)







Please note that events, activities, attraction opening times are correct at the time of printing and may change due to unforeseen circumstances. Contact details are provided for every listing so please check in advance of your journey. Photography courtesy of Tourism NI, Gareth O'Cathain Photography, Lukejoycephotography.com, David Nevin, Daria Casement Photography, Tourism Ireland, March Leach, RW Photography, Brian Morrison, Tony Plearin, John Miskelly, Wayne Gilmore, Carrie Davenport Photographic, Rachel McQuillan, Jonathan Ryder Photography and Jim Corr Photography.





Family Fun



Heritage

Adventure  
Seekers

For All

# Attractions

## 1. Titanic Belfast



1 Olympic Way,  
Queen's Road, BT3 9EP  
☎ 028 9076 6386

Titanic Belfast is a 'must see' visit in any tour of Belfast and Northern Ireland. Housed in an iconic, 6 floor building, with 9 interactive galleries telling the story of RMS Titanic and the maritime history of Belfast. It is located right beside the historic site of this world-famous ship's construction.

[titanicbelfast.com](http://titanicbelfast.com)

## 2. SS Nomadic Belfast & Hamilton Dock



Queen's Road, BT3 9DT  
☎ 028 9076 6386

Over 100 years old, SS Nomadic is the tender ship that served RMS Titanic on her maiden voyage, carrying first and second class passengers from the port of Cherbourg to Titanic. Originally built by Harland and Wolff in 1911, Nomadic has returned to Belfast and is the last remaining ship of the White Star Line. Standard Titanic Experience admission includes entrance to SS Nomadic.

[nomadicbelfast.com](http://nomadicbelfast.com)

## 3. HMS Caroline



Alexandra Dock,  
Queen's Road, Belfast, BT3 9DT  
☎ 028 9045 4484

HMS Caroline is a First World War-era naval vessel now restored as a must-see floating museum with an amazing story to tell. Enjoy our new quayside visitor centre and exhibition space dedicated to telling the personal stories of those who served on the 'Carry'. Then step aboard to see a powerful film on the drama of Jutland and experience impressively restored cabins as well as state-of-the-art interactive exhibits.

[hmscaroline.co.uk](http://hmscaroline.co.uk)

## 4. Samson & Goliath



Towering over Titanic Quarter are the landmark yellow gantry cranes of Harland and Wolff. Constructed in 1969 and 1974, Samson and Goliath are still in operation today, and stand 96m and 106m tall. You can get up close & personal to these giants on the Wee Tram Tour.

## 5. Harland & Wolff Drawing Offices / Titanic Hotel Belfast



Queen's Road, Belfast, BT3 9DT  
☎ 028 9508 2000

The original red brick building is a truly authentic part of Titanic's story and is where the initial conception of the world's most famous ship took place. Harland and Wolff had two main drawing offices within the building, where naval architects, marine engineers and draftsmen were responsible for the design of the ships. This historic building has now undergone restoration and transformation into Titanic Hotel Belfast, preserving its place in Belfast's maritime heritage.

[titanichotelbelfast.com](http://titanichotelbelfast.com)

## 6. Titanic's Dock & Pump-House



Catalyst Inc, Queens Road, BT3 9DT  
☎ 028 9073 7813

Thompson Dock is the final place where RMS Titanic rested on dry ground. See the ship's physical footprint in history, learn about Belfast's shipbuilding legacy in the visitor centre or take a guided tour. Check website for opening times. Private bookings on arrangement.

[titanicsdock.com](http://titanicsdock.com)

## 7. Titanic & Olympic Slipways



Titanic Belfast stands at the end of the historic slipways where Titanic and Olympic were built and from where these famous ships were first launched into the water, over a hundred years ago. The slipways still contain original features, and now include a Titanic Memorial Garden on the Olympic slipway where grass lawns alternate with timber decking to illustrate the proportion of Titanic's victims and survivors from each of the passenger classes and crew. At night the slipways and plaza are lit up, showing the outline of the slipways and Titanic's journey on the largest outdoor map of the northern hemisphere.

## 8. Abercorn Basin



Right in the heart of Titanic Quarter, Abercorn Basin is a working marina with pontoons for leisure craft.

## 9. Kit - Titanic Kit



Overlooking the Abercorn Basin is a huge bronze sculpture that depicts the Titanic in the style of a toy kit or Airfix model.

## 10. Belfast Harbour Heritage Room



Belfast Harbour Commissioners, Harbour Office, Corporation Square, Belfast  
☎ 028 9055 4422

Belfast Harbour hosts a permanent exhibition in its Harbour Office entitled 'A Port that Built a City' to celebrate 400 years of Belfast's maritime history. As well as interactive displays examining the Harbour and its unique art collection, the space also includes a stunning stained glass window by local artist, Ann Smith, the 'Titanic table' and artefacts from the Harbour's past. To book a viewing please visit [belfast-harbour.co.uk](http://belfast-harbour.co.uk) and search for Heritage Room.

## 11. PRONI



2 Titanic Boulevard, Belfast, BT3 9HQ  
☎ 028 9053 4800

The Public Record Office of Northern Ireland (PRONI) is the official archive for NI, holding over 3 million public and privately deposited records. PRONI promotes and makes available the unique archival heritage of NI for present and future generations. Explore your family and local history, enjoy talks and lectures on research and engage with exhibitions.

[nidirect.gov.uk/proni](http://nidirect.gov.uk/proni)

## 12. SSE Arena, Belfast



Queen's Quay, Belfast, BT3 9QQ  
☎ 028 9073 9074

The SSE Arena, Belfast is Northern Ireland's premier indoor sports and entertainment venue. This 11,000 seater arena plays host to major concerts, family shows, sporting events and is home to the Belfast Giants ice hockey team.

[ssearenabelfast.com](http://ssearenabelfast.com)

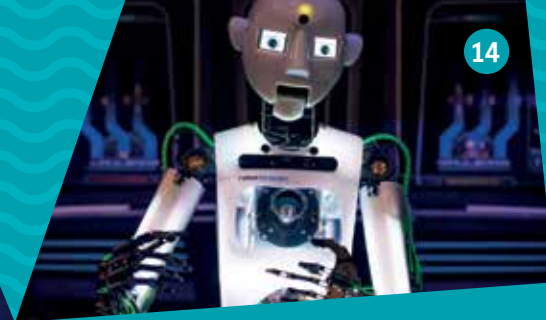




18



17



14



16

### 13. Odyssey Pavilion



Queen's Quay, Belfast, BT3 9QQ  
☎ 028 9045 8806

This fully covered entertainment and leisure complex includes an indoor arena, Odyssey Bowl, 12 screen multiplex cinema with 3 VIP screens and the Pavilion of bars and restaurants. Plus, a 1,500-space car park.

[odysseypavilion.co.uk](http://odysseypavilion.co.uk)

### 14. W5



2 Queen's Quay, Belfast, BT3 9QQ  
☎ 028 9046 7700

W5 is a science and discovery museum, so visitors of all ages are free to let their imagination turn, twist and fly through 250 hands-on permanent exhibits! W5 also presents a changing programme of large & small scale temporary exhibitions and shows within the admission price! With over 250 interactive exhibits in four incredible exhibition areas – DISCOVERY, GO, SEE and DO, W5 provides a unique experience as well as fantastic fun for visitors of all ages. Adults £9.80, Children £7.50, Under 3s free. Family Tickets from £27.50.

[w5online.co.uk](http://w5online.co.uk)

### 15. TEC Belfast



17 Queen's Road, Belfast, BT3 9DU  
☎ 028 9076 6386

The TEC is Titanic Quarter's bespoke venue for local, national & international consumer, lifestyle and trade events! From exhibitions to community and sporting events as well as large-scale conferences. Check out the event calendar on [tecbelfast.com](http://tecbelfast.com)

### 16. Window on Wildlife (WOW)



195 Airport Road W, Belfast, BT3 9ED  
If you've never visited the RSPB's nature reserve right here in the heart of Belfast prepare to be WOWed! WOW offers visitors amazing views of Belfast Lough and the birds and wildlife that call the reserve home. Just 10 minutes from Belfast City Centre, and a few minutes from Holywood Exchange, Belfast. Opening hours: everyday except Tuesday. 10-5pm March to October, 10-4pm November to February. Entry is free for RSPB members. For non-members, the charge is £3 for adults, £1.50 for children.

[rspb.org.uk/belfastlough](http://rspb.org.uk/belfastlough)

### 17. The Great Light



Titanic Walkway,  
Queen's Road, Belfast, BT3 9DT  
☎ 028 9073 0490

Visit the Great Light, located on the Titanic Walkway. This is one of the largest optics of its kind ever built in the world, and it produced one of the strongest lighthouse beams ever to shine. Just a note - if the blinds are down it's to protect the Great Light from the sunlight.

[greatlightttq.org](http://greatlightttq.org)

### 18. Vertigo Indoor Skydiving



Queens Road, Belfast, BT3 9DT  
☎ 0870 066 1533

Always wanted to skydive? Not too enthusiastic about jumping out of a perfectly good aeroplane? Why not try the exciting world of indoor skydiving? The Titanic Park complex in the heart of Belfast, has Ireland's only indoor skydiving centre, allowing anyone aged from 4-104 to spread their wings and fly at 120mph! Catering for all flying abilities, from first time flyers to pro flyers, with packages for individuals, groups of flyers and everything in between! Book via [wearevertigo.com](http://wearevertigo.com)

## Not too far away

### Visit CQ (The City Quays)

#### 19. Where the City meets its Quays...



Explore the rich maritime heritage of ship-building and Sailortown. Belfast's emergence as a major port and the city's subsequent growth and development as an industrial hub started here, where you can see the Clarendon Dock, one of the oldest docks in Ireland still in existence. Wander past the Dividers sculpture to one of Belfast's oldest and best-known churches world-wide, St Joseph's Church. Visit Sinclair Seaman's Church and call into the historic Harbour Office to view the Titanic dining table and Heritage Room with artefacts from the Harbour's past.

City Quays is Belfast's newest and most modern mixed-use regeneration project, providing commercial offices in City Quays 1 and City Quays 2, shops, cafes, restaurants and the new AC Hotel Belfast right on Belfast's waterfront.

Passing the Big Fish at Donegall Quay, don't forget to stop for a selfie and closer inspection of the tiled exterior, which tells the story of Belfast.

### Visit EastSide

#### 20. C.S. Lewis Square



Visit this stunning new public park in East Belfast featuring seven bronze sculptures from 'The Lion, The Witch and The Wardrobe' including Aslan, the White Witch, Maugrim, Mr Tummus, Mr & Mrs Beaver, the Robin and the Stone Table.

#### 21. EastSide Visitor Centre



☎ 028 9045 8114

Located next to C.S. Lewis Square, this iconic new visitor centre is your gateway to East Belfast. Packed full of information on EastSide's key attractions, famous faces and places, sample local delicacies from JACK Coffee Bar and discover all that's on offer in East Belfast.

[visiteastside.com](http://visiteastside.com)

#### 22. Connswater Community Greenway



A 9km linear park through the heart of East Belfast.

[connswatergreenway.co.uk](http://connswatergreenway.co.uk)



19





**avertigo**  
INDOOR SKYDIVING

**Have you ever wanted to skydive? Not too keen on jumping out of a perfectly good aeroplane? Look no further - Ireland's ONLY indoor skydiving centre is located in the heart of Belfast's Titanic Quarter!**

*Experience a thrill like no other in our state of the art open air wind tunnel.*

*We have a range of packages suitable for individual flights, birthdays, groups, experienced flyers and everything in between!*

*To book or find out more, visit [wearevertigo.com](http://wearevertigo.com)*

  [/wearevertigo](https://www.instagram.com/wearevertigo)

*Located opposite the Titanic Museum, below the cranes*



TITANIC HOTEL  
BELFAST

## Anchor Down at Titanic Hotel Belfast

Located in the former headquarters of Harland and Wolff, and infused with heritage and poignancy.

**Rooms from £109.**

\*Subject to availability. Terms and conditions apply.

[www.titanichotelbelfast.com](http://www.titanichotelbelfast.com)





Family Fun



Heritage

Adventure  
Seekers

For All

# Regular Tours, Activities & Events



## The Discovery Tour Daily Tours

☎ 028 9076 6386

This one-hour walking tour compliments a visit to the Titanic Experience and invites guests to walk in the footsteps of the people who designed and built RMS Titanic. Learn about the historic Drawing Offices, the original slipways, as well as exploring the architecture of Titanic Belfast itself. Adults £9.00, Children £7.50.

For more information and to book tickets, visit [titanicbelfast.com](http://titanicbelfast.com)



## Sunday Afternoon Tea at Titanic Belfast

1 Olympic Way, Queen's Road, BT3 9EP  
☎ 028 9076 6386

Experience sumptuous afternoon tea in the stunning surrounding of the Titanic Suite at Titanic Belfast. Enjoy handmade cakes and delicious pastries, served with luxurious teas or a glass of champagne, all in front of the fabulous replica Titanic staircase.

For more information and to book tickets, visit [titanicbelfast.com](http://titanicbelfast.com)



## Odyssey Cinemas

Open 7 days a week  
☎ 028 9073 9134

Catching the latest releases at Odyssey Cinemas is the perfect addition to a day at the Odyssey. The cinema complex is NI's largest, with 12 Fully Digital screens, 3 of which are exclusive VIP screens, plus a luxurious Director's Lounge, offering panoramic views of the Belfast skyline and riverfront.

[odysseycinemas.co.uk](http://odysseycinemas.co.uk)



## Odyssey Bowl

Open 7 days a week  
☎ 028 9045 2100

They have something for everyone! 20 Lane Bowling Centre with arcade, pool tables and the Lower Deck Diner, serving delicious food & alcoholic drinks. They provide entertainment for all age groups and events, from night time entertainment to parties for all occasions.

[odysseybowl.co.uk](http://odysseybowl.co.uk)



## Titanic's Dock & Pump-House Tours

Open each day between 10.30am - 5pm  
☎ 028 9073 7813

Explore the world's only authentic Titanic landmark! Visit the last place Titanic rested on dry ground. Descend 44ft to the bottom of Titanic's Dock, experience the engineering brilliance and see the original pumps that could empty the massive dock in only 100 minutes. Self-guided tours.

For more information, visit [titanicsdock.com](http://titanicsdock.com)



## Titanic Tours Belfast

☎ 07852716655

Visit the key sites in the history of the construction and launch of the greatest liner ever built in Belfast – Titanic. Tours are conducted by broadcaster & journalist Susie Millar, the great-granddaughter of Thomas Millar, who worked in Harland & Wolff on the construction of Titanic & then sailed onboard her as an engineer on the fateful maiden voyage to New York in April 1912.

Visit [titanictours-belfast.co.uk](http://titanictours-belfast.co.uk)



## Belfast Giants

Various dates

The SSE Arena, Belfast

☎ 028 9046 0044

Enjoy the fast-paced family friendly action with the Belfast Giants ice hockey team.

[belfastgiants.com](http://belfastgiants.com)



## Lagan Boat Company NI Ltd

☎ 028 9024 0124 / 07718910423

Operating on the River Lagan and Belfast Harbour for the last 20 years, the daily guided Titanic Boat Tours take in the magic of years gone by, whilst visiting the first historic launching site of RMS Titanic. Embrace and learn the history of the World's Greatest Shipyard, which built the majestic Titanic while also experiencing the new regeneration & innovation of Titanic Quarter. Daily public sailings depart from Donegall Quay at 12.30pm, 2pm & 3.30pm.

Winter schedule available online

[laganboatcompany.com](http://laganboatcompany.com)



## Belfast MicnBike

☎ 07563167521

Guided Cycle Tour of Titanic Quarter and Belfast City Centre telling the fascinating story of Belfast's growth, maritime/ industrial heritage & political upheavals. £15 per person. Radio receiver/headset, helmet, hi-vis vest & insurance included. Participants provide their own bike.

Tours last approx. 2 hours. Must be booked 24 hours before tour start time.

[belfastmictours.com](http://belfastmictours.com)



## Climbit at W5

☎ 028 9046 7700

Discover W5's BIGGEST exhibit ever! Climbit is an unusual mixture of physical fun, exploration and art! This huge multi-storey climbing structure is a cross between a maze and a jungle gym. The first of its kind in the UK and Ireland, Climbit is a unique, visually elegant, three-dimensional sculpture specially designed for climbing.

Climbit is FREE with admission to W5.

[w5online.co.uk](http://w5online.co.uk)



## Spacebase at W5

☎ 028 9046 7700

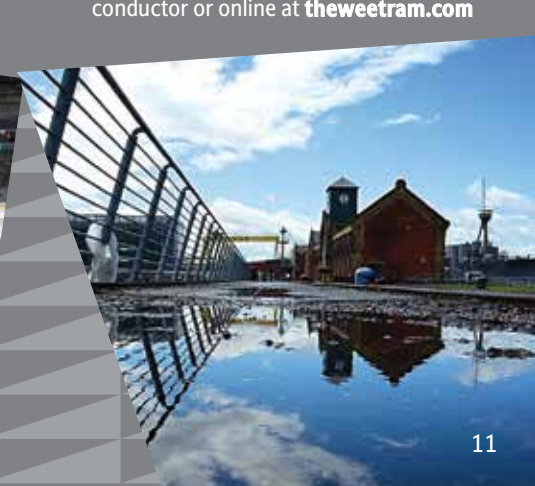
Welcome to Spacebase, our new multi-sensory activity zone for 3-11 year olds! Our new space themed activity zone provides a safe indoor environment for children to climb, jump, twist, crawl and slide through climbing frames, tunnels, ropes and soft obstacles. Only available to W5 visitors and costs an additional £3.50 per child.

[w5online.co.uk](http://w5online.co.uk)



## The Wee Tram

Departing from Titanic Belfast & SS Nomadic every half hour between 12 & 5pm, Fri to Sun. Hop on board the Wee Tram for a fun-filled guided tour of Titanic's historic shipyard. Explore Titanic's footprint on the slipways, visit the Pump-House & Dry Dock, call at HMS Caroline, and get up close & personal to the giant cranes. The Wee Tram carriages are based on the tram cars that ran through the shipyard in Titanic's day. Purchase tickets from the conductor or online at [theweetram.com](http://theweetram.com)







**TITANIC'S SHIPYARD TOUR**

**DEPARTS FROM TITANIC BELFAST AND  
SS NOMADIC EVERY HALF HOUR 12-5**

**THEWEETRAM.COM**

**EXPLORE TITANIC'S FOOTPRINT ON THE SLIPWAYS - GET CLOSE TO GIANTS - CALL AT HMS CAROLINE, PUMP-HOUSE & DRY DOCK**

**Hop aboard for a fun-filled guided tour of Titanic's historic shipyard**  
Runs every day in May – August, weekends only in March, April, September and October  
**Tickets on-board** from the conductor **or online** at [theweetram.com](http://theweetram.com)

# Top Travel Tips

## On Foot

Take a pleasant stroll from the city centre, crossing the River Lagan on one of the three bridges. Only a 20 minute walk.

## By Car

Approaching Belfast on M1/2 follow signs for Belfast City Airport, then Titanic Quarter.

## By Glider

Glide through city traffic and arrive fresh and ready on a modern and high tech mode of travel, providing direct cross-city services between the east and the west of the City and linking into Titanic Quarter.

[translink.co.uk](http://translink.co.uk)

## By Train

Nearest station is Titanic Quarter Halt, approx. a 10 min walk.

[translink.co.uk](http://translink.co.uk)

## By Bicycle

The National Cycle Network links Comber Greenway to Titanic Quarter.

[sustrans.org.uk](http://sustrans.org.uk)

## Belfast Bikes

Saddle up with the Belfast Bike Scheme. Docking station at SSE Arena, Belfast and next to SS Nomadic, Catalyst Inc and EastSide Visitor Centre.

[belfastbikes.co.uk](http://belfastbikes.co.uk)

## By Tram

The Wee Tram operates a hop on hop off service between all the Titanic Quarter attractions.

[theweetram.com](http://theweetram.com)

## Titanic & Belfast City Bus Tours

Enjoy a luxury open top bus tour across Belfast and stop off at Titanic Quarter.

[citytoursbelfast.com](http://citytoursbelfast.com)

## Getting to EastSide from Titanic Quarter Via Sam Thompson Bridge

*For bicycle / pedestrians.*

Travel along Sydenham Road until you reach the roundabout. Take the 2nd exit onto Airport Road and cross the Sam Thompson Bridge into Victoria Park.

## Via Fraser Pass

*For bicycle / pedestrians.*

Travel along the Sydenham Road; cross at the traffic lights heading towards the Titanic Quarter Rail Halt. Go through underpass onto Fraser Pass, continue straight to Newtownards Road.

## Maritime Mile

Go the distance and check out walk or run Belfast's Maritime Mile, and experience NI's historic giants along the City's iconic heritage waterfront. Explore all the wonderful attractions, sculptures and open spaces. From St Joseph's Church, Clarendon Dock, the Big Fish to SS Nomadic, Titanic Belfast, the Great Light and the vast Thompson Dry Dock.





# Eating Out

## Bistro 401 & The Galley Café at Titanic Belfast

1 Olympic Way, Belfast, BT3 9EP

☎ 028 9076 6386

Choose from the Bistro's restaurant menu featuring the best of local produce or sample speciality teas, coffees and delicacies at the Galley Café.

[titanicbelfast.com](http://titanicbelfast.com)

## Hickson's Point

Located on plaza outside Titanic Belfast  
1 Olympic Way, Belfast, BT3 9EP

☎ 028 9076 6386

Inspired by one of the first ship builders in the city, our destination bar Hickson's Point offers an authentic 1900's public house setting, serving up the spirit of the shipyard with traditional music, entertainment, heritage décor and locally produced food.

[titanicbelfast.com](http://titanicbelfast.com)

## The Wolff Grill

Titanic Hotel Belfast

8 Queens Road, Belfast, BT3 9DT

☎ 028 9508 2000

A refined dining restaurant employing the finest locally sourced ingredients, offering a delicious menu and unique atmosphere for guests. Views towards the spectacular Titanic Belfast building and historic slipways where Titanic was constructed. Undoubtedly the best Titanic Quarter restaurant to eat in during your visit or stay in the area.

[titanichotelbelfast.com](http://titanichotelbelfast.com)

## The Dock Café

ARC Retail, 2a Queen's Road, BT3 9DH

Located at the base of the ARC apartments. The Dock is Belfast's only Honesty Box Café. Enjoy fresh locally-made coffee, teas, buns and soup (or bring your own food), browse the artwork and local history. Find a cosy corner or a squashy sofa, and if you want, make a donation on the way out it's totally up to you! Opening hours Mon-Sat 11-5pm. PLUS customers can enjoy a 'seats & eats' breakfast in co-operation with the Titanic Spar.  
[the-dock.org](http://the-dock.org)

## Paper Cup - Kitchen & Coffee

Queen's Road, Belfast, BT3 9DH

☎ 028 9076 6400

Check out the stunning views of Titanic Quarter whilst enjoying tasty homemade food. Open from 8am every day, join Paper Cup for breakfast, lunch, sweet treats & choose from a wide selection of teas and coffee.

Follow on Facebook & Instagram:

[@papercuptitanic](https://www.facebook.com/papercuptitanic)

## Heritage Café at PRONI

PRONI, 2 Titanic Boulevard,  
Belfast, BT3 9HQ

☎ 028 9053 4800

PRONI's café provides cooked breakfasts, hot and cold lunches, pastries, refreshments and speciality coffees. Opens Mon-Fri from 9.30-3pm.  
[nidirect.gov.uk/proni](http://nidirect.gov.uk/proni)

## Café 1404 at Titanic's Dock and Pump-House

Catalyst Inc, Queen's Road,  
Belfast, BT3 9DT

☎ 028 9073 7813

Enjoy sandwiches, tray-bakes, locally roasted coffee & loose leaf teas in the shadows of the cavernous dry dock where the RMS Titanic last stood on dry land. Take a self-guided tour to the bottom of the dock & get a real feel for the size of this infamous ship.

[cafe1404.com](http://cafe1404.com)

## The Odyssey Pavilion

2 Queen's Quay, Belfast, BT3 9QQ

☎ 028 9045 8806

Check out an array of bars and restaurants including 'The Streat' restaurant, Pizza Hut, Rockies Sports Bar (houses a museum to the Belfast Giants Ice Hockey Club) and the Odyssey Bowl café.

[odysseypavilion.co.uk](http://odysseypavilion.co.uk)

## Thyme Restaurant

Premier Inn, 2a Queen's Road,  
Belfast, BT3 9DT

☎ 08715 279210

The hotel's Thyme restaurant serves a full range of food, snacks and refreshments. Open to the public, T&C's apply.

[premierinn.com](http://premierinn.com)

## The Yard, Scullery and Linen Lounge at Belfast Metropolitan College

Titanic Quarter Campus

7 Queens Road, Belfast, BT3 9DT

☎ 028 9026 5170

The Linen Lounge is the perfect place for a relaxing morning coffee, a bistro lunch or fine dining experience. During term-time, food is prepared and served by students undertaking professional cookery and hospitality programmes at NI's largest college. Please refer to website for opening times and to make reservations.

[belfastmet.ac.uk](http://belfastmet.ac.uk)

## The Green Deli, Spar, Arc Retail

ARC Retail, Queen's Road,  
Belfast, BT3 9FP

☎ 028 9073 7177

The Green Deli offers customers homemade, fresh food at reasonable prices. Offering a huge range of hot meals, salads and sandwiches with breads from local bakers, there's something for everyone to enjoy.

[greendell.co.uk](http://greendell.co.uk)



### Rain Check Belfast

ARC Retail, Queen's Road,  
Belfast, BT3 9FP

☎ 028 9099 5114

Open 7 days a week and located in the  
ARC Retail Complex behind the SSE  
Arena, Rain Check is the perfect stop  
for breakfast, lunch, an evening meal or  
coffee and cocktails.

 /raincheckbelfast

### Novelli at City Quays

AC Hotel Belfast, City Quays,  
Belfast, BT1 3FE

☎ 028 9531 3191

Enjoy panoramic views across Belfast  
Lough to Titanic Quarter at multi-  
Michelin-starred chef Jean Christophe  
Novelli's Ireland début. Novelli at  
City Quays serves up an all-day  
dining experience with an authentic  
Mediterranean menu from locally  
sourced produce.

[novellirestaurants.co.uk/belfast](http://novellirestaurants.co.uk/belfast)



**Bistro - Breakfast, Lunch & Dinner**

 [www.raincheckbelfast.com](http://www.raincheckbelfast.com) 

**New 42-seater licensed Bistro Restaurant**

ARC Retail Units, Queens Road, Titanic Quarter, Belfast, BT3 9DT. T:02890 995114



**HMS CAROLINE**  
TITANIC QUARTER, BELFAST

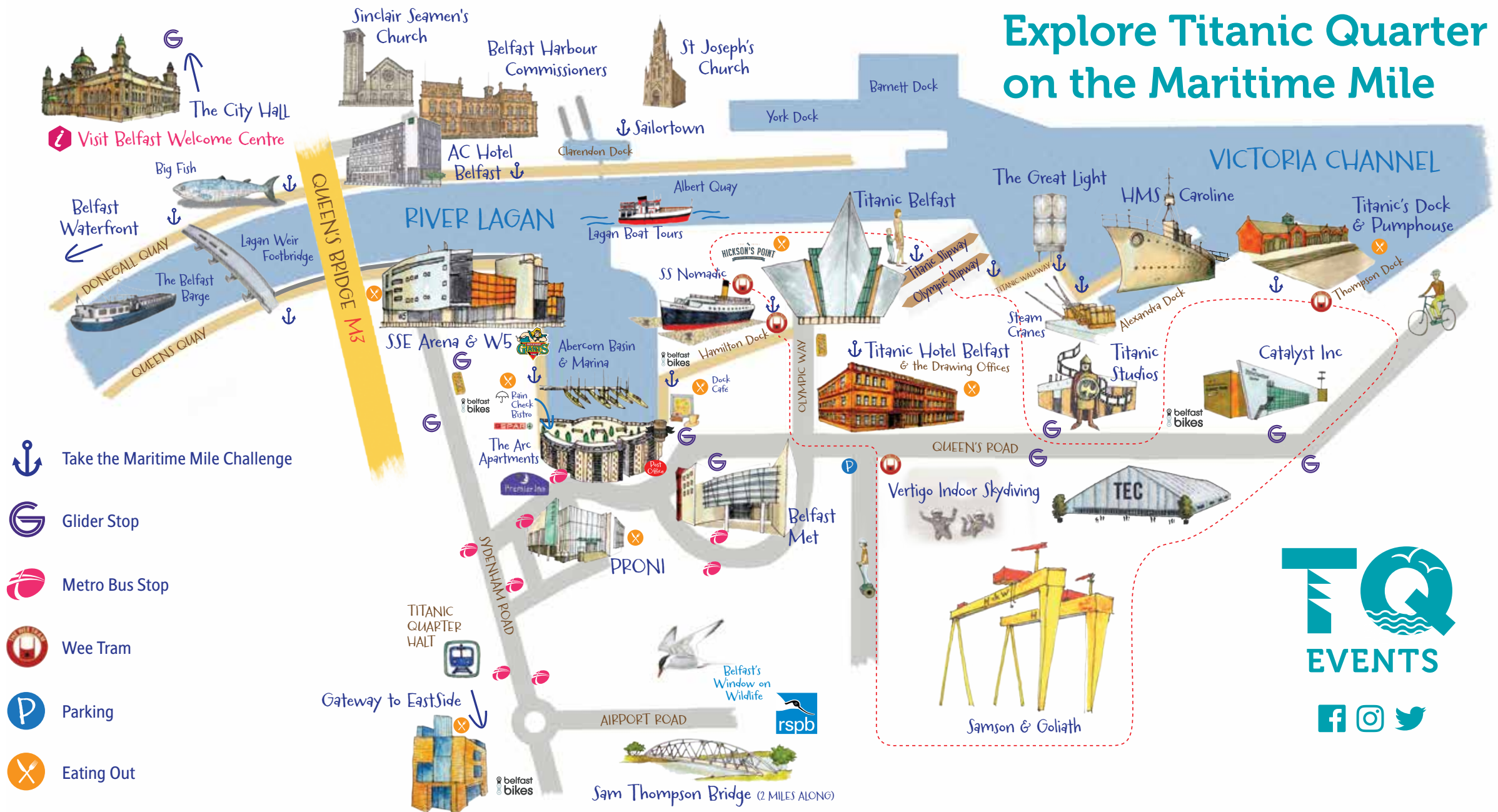
**Book online  
now and save!**



[hmscaroline.co.uk](http://hmscaroline.co.uk)



# Explore Titanic Quarter on the Maritime Mile



**TQ**  
EVENTS







## DISCOVER A SERIES OF INSPIRING TITANIC TASTER TOURS

EXPLORING OUR MARITIME HERITAGE  
THROUGH ART, PHOTOGRAPHY AND FOOD.

FOR DATES CHECK OUT

 /TQEVENTSBELFAST



 TitanicFoundation

 @TFL\_Belfast

[titanic-foundation.org](http://titanic-foundation.org)

For more information visit:



TQEventsBelfast