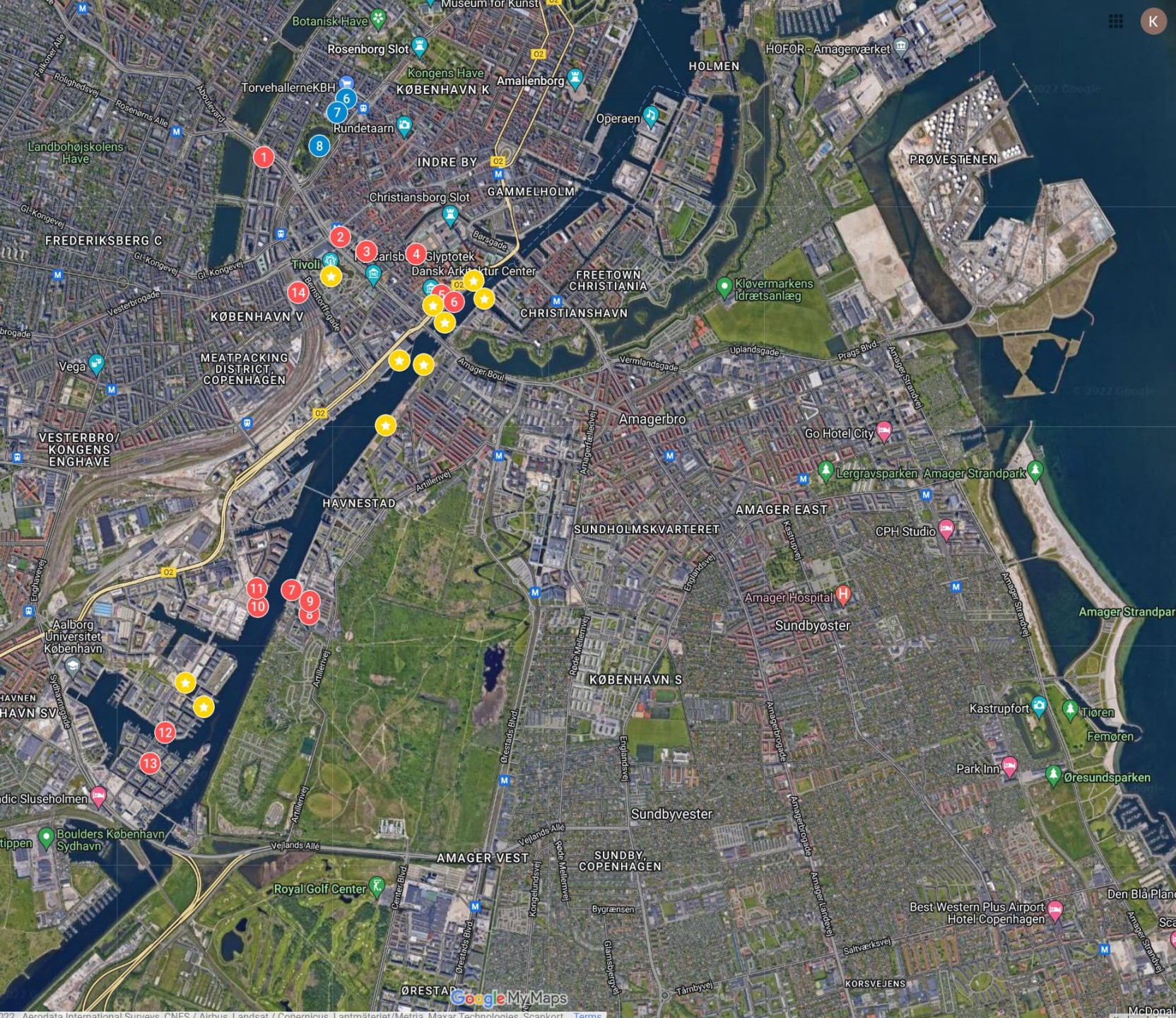


Best Practice Trip

Review – Copenhagen
2022

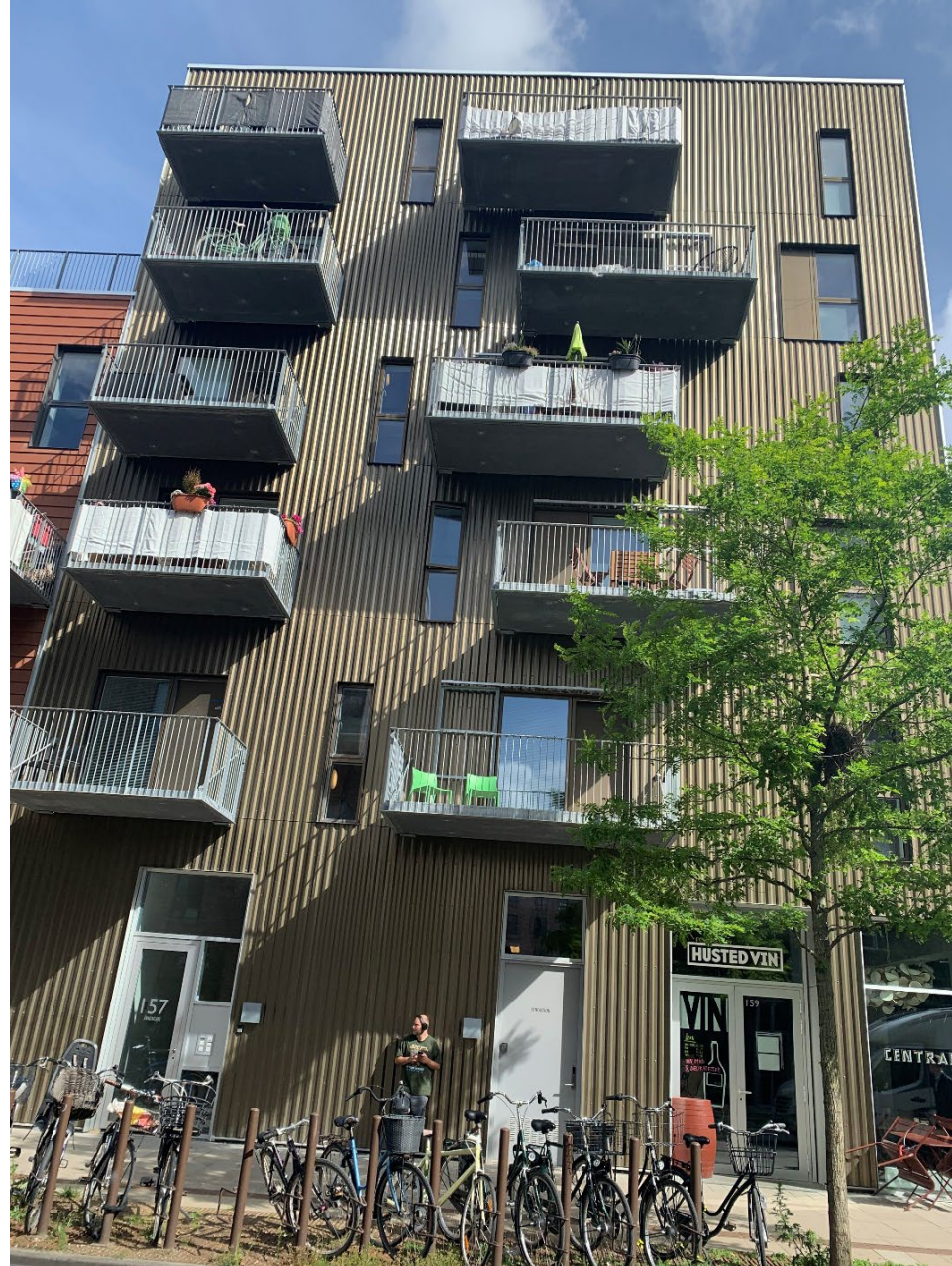


**MARITIME
BELFAST**



Mixed Environments

- Different uses and house types – residential / offices
- Development is people centric & driven by quality of life, contributing to overall place / neighbourhood / city



Mixed Environments

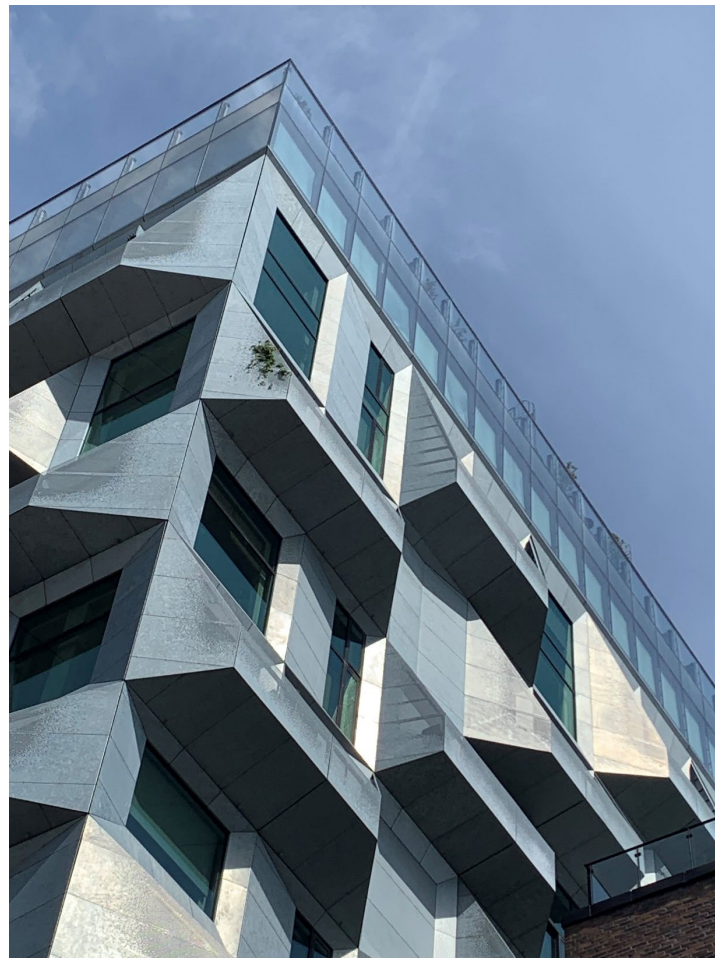
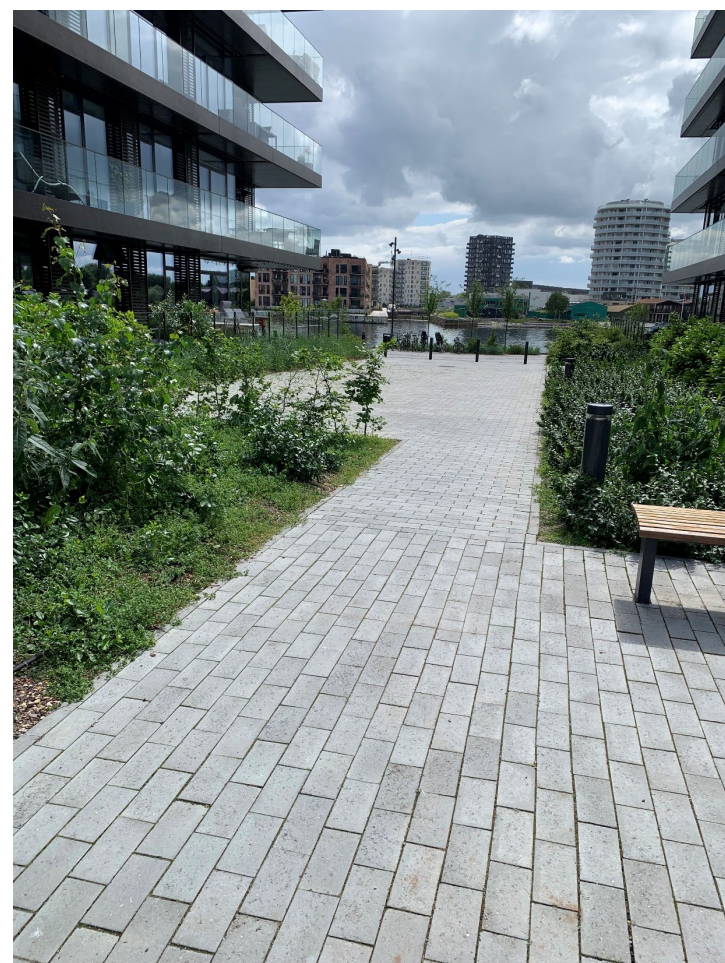


Controlling the car

- Carparking underground, creating courtyards & garden areas
- Community uses & public facilities on top of carparks – play park & views
- Transportation policy

Orientating towards the water

- Buildings at right angles / perpendicular to the water for greater access & more water views
- Looking at how a building contributes to the overall place/ neighbourhood /city
- Man-made canals to provide more access to water
- Constant and regular views of the water (not blocked by high rise buildings)



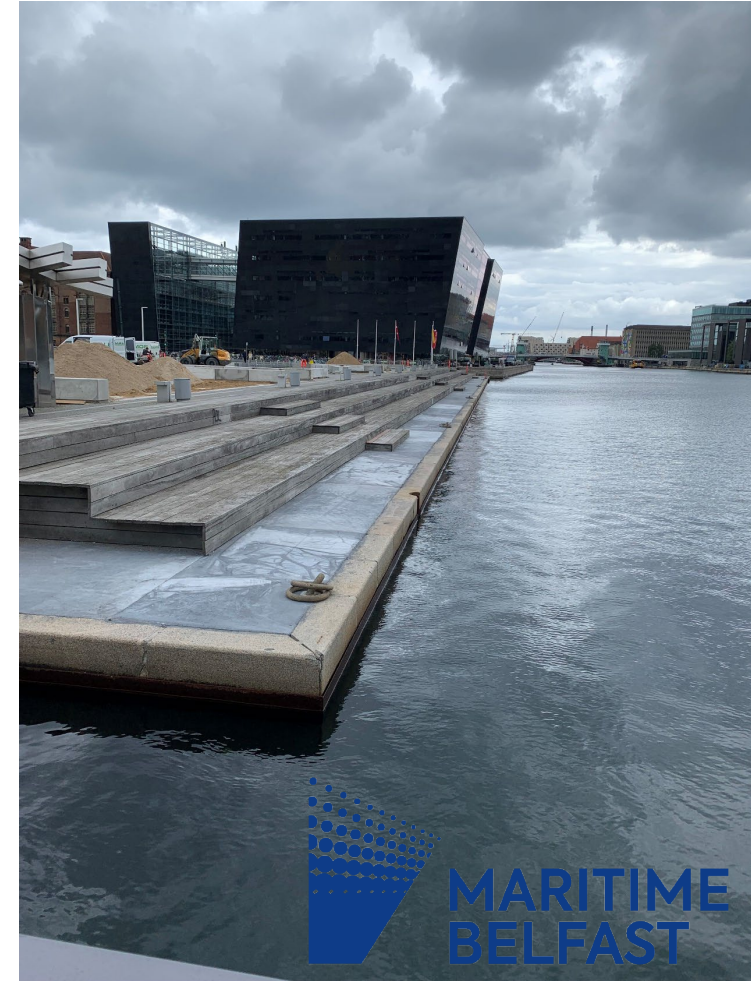
Maximising Waterfrontage

- Interesting activity along waters edge
- Converted listed building – café / bar
- Reimagined grain tower



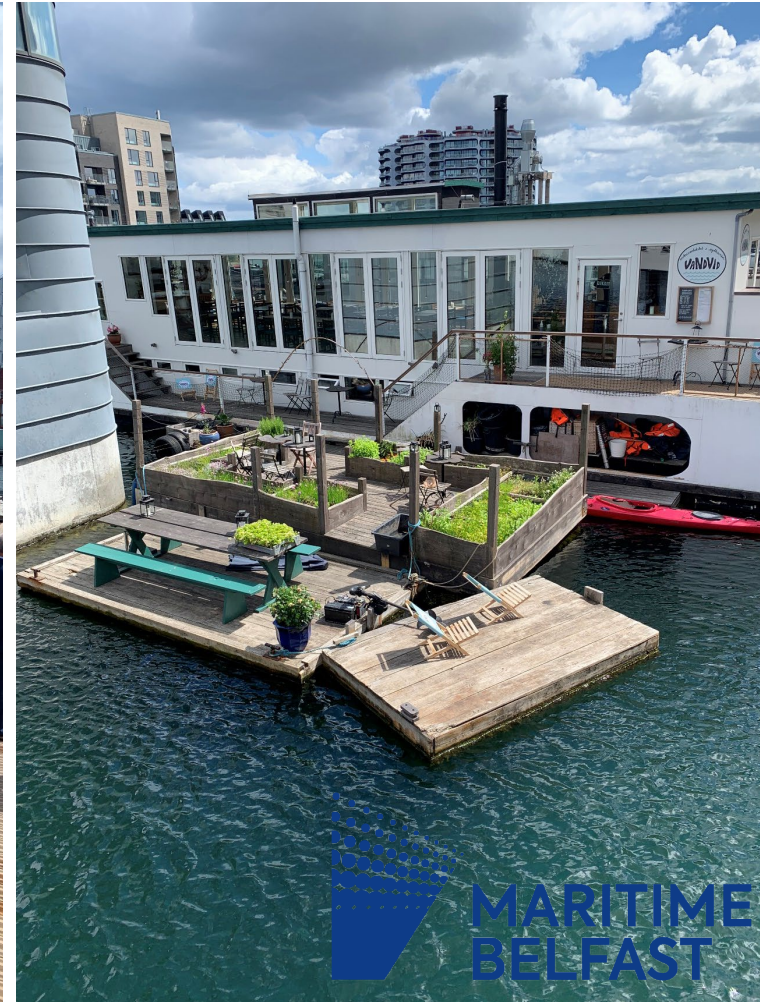
Direct access to the water

- Stepping down from the edge – sauna / swimming baths / boating (commercial & private)
- No railings
- Pontoons
- Views and pedestrian path



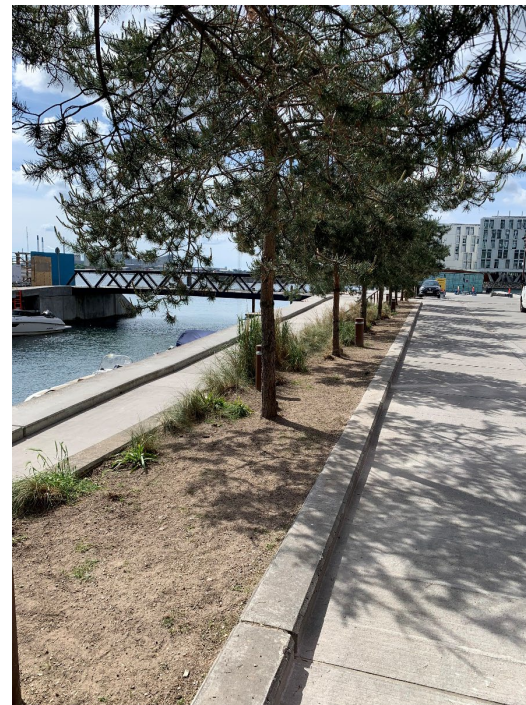
Commercial and Private use of the water

- Boat tours, water taxis
- Floating café, restaurant



Landscaping

- Meadow flower planting
- Roses & creepers
- Grasses



Innovative seating

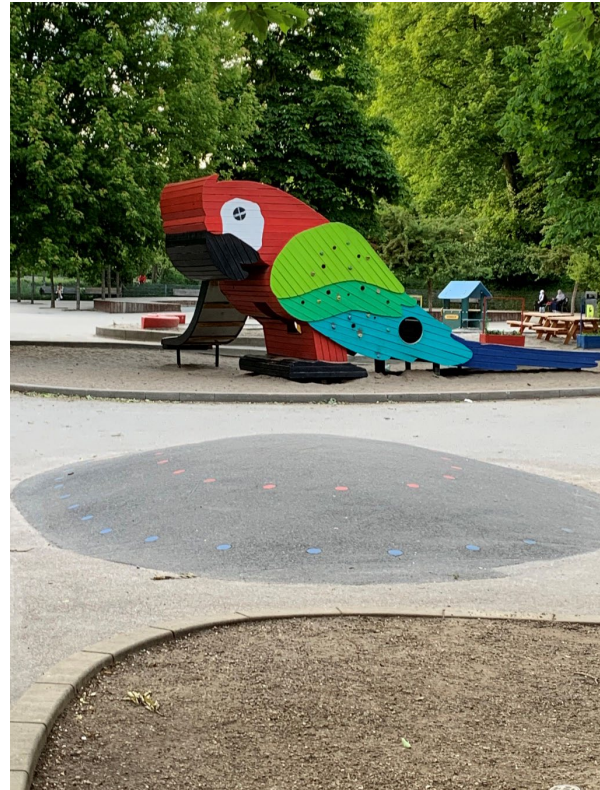
- Natural materials, interesting shapes and designs
- Using imagination to make an impact eg well placed wooden blocks
- Rotating seating to face the sun
- Playful designs



MARITIME
BELFAST

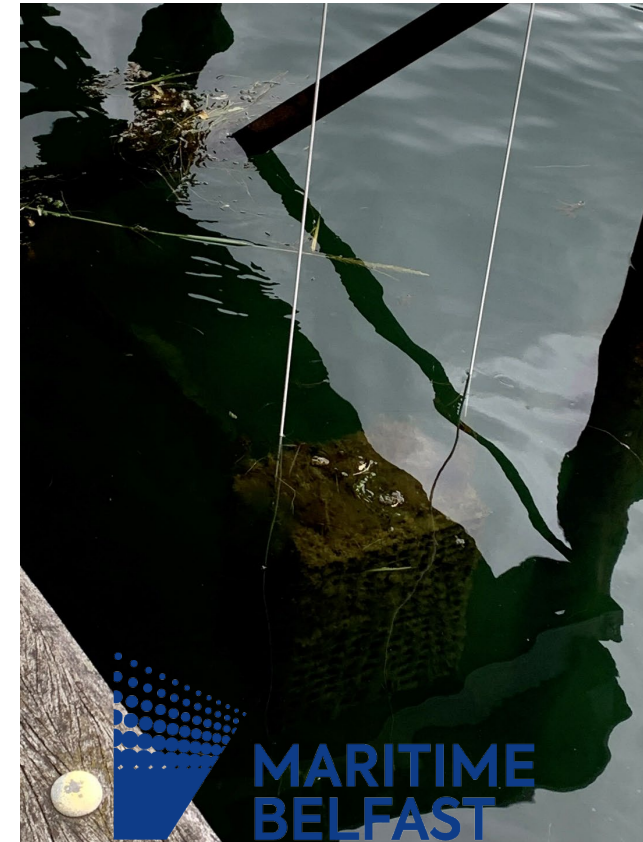
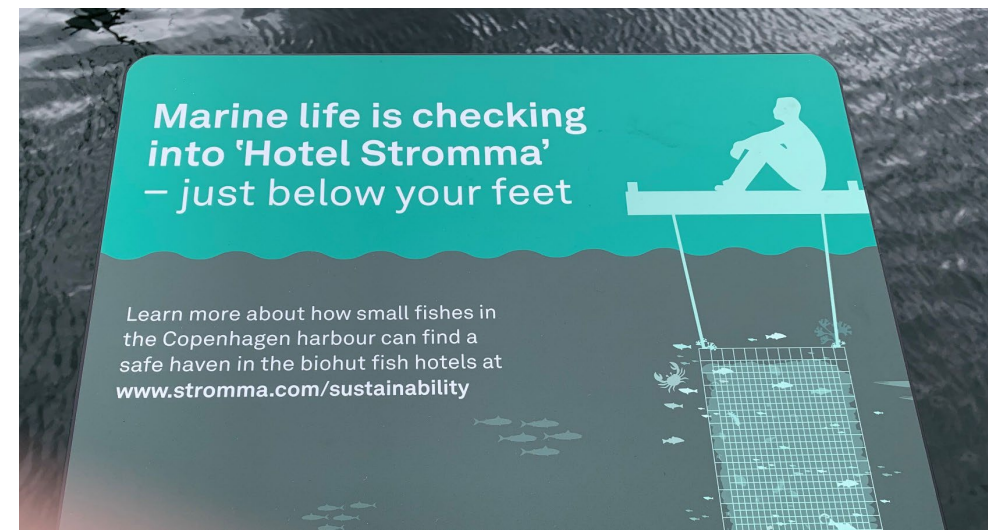
Play

- Playgrounds incorporated into designs and themed



Sustainable city

- Cycling infrastructure
- Cleaning the water
- Natural habitats and the environment
 - Fish hotels



Repurposing heritage

- **Absalon Folkekirke** - Former church – now community space & folk-kitchen



Helsingor

- Former dry dock now Maritime Museum



Key learnings

- Concern for ensuring quality of life appears to inform and influence how development is carried out in Copenhagen
- Holistic communities rather than real estate
- Joined up approach between stakeholders (civic & private)
 - a collaborative effort, planners, architects, landscape architects, developers, communities and civic leaders.
- Overall control retained and clear design briefing for overall scheme - masterplan, and specific plots that individual developers /architects then interpret.
- Thinking long term – over a 50-year horizon
- A little imagination can have a huge impact

